

## **Joint Committee of the Whole/Park & Recreation Commission Minutes**

Wednesday, December 4, 2019 - 6:00 p.m.  
Council Chambers

**Purpose:** Arrowhead Park Phase 1A 70% design update.

**Committee of the Whole Present:** Alderpersons Bates, Lendrum, Erickson, Spellman, Steele, Kunz, Stevenson and Mayor Kaufert. Alderperson Boyette and Lang were excused.

**Also Present:** City Attorney Godlewski, City Clerk Sturn, Director of Finance Easker, Director of Community Development & Assessment Haese & Director of Public Works Kaiser.

**Park & Recreation Commission Present:** President Lawell, Commissioners Zaretzke, Hancock-Cooke, Hillstrom, Vedder, Loudon, Council Rep Kunz. Commissioner Kelly and Galloway were excused.

**Also Present:** Park & Recreation Director Kading, Superintendent of Recreation Kluge, Recreation Supervisor Schott, Superintendent of Park Fink, SEH Rep Jeff Saxby, Stantec Rep Jon Gumtow, Gries Architectural Group Rep Mark Keating, Boys' and Girls' Brigade reps John Benberg & Ryan Pheifer and Scott Becher.

Council President Stevenson called the meeting to order at 6:04 p.m.

Park & Recreation President Lawell called the meeting to order at 6:04 p.m.

### **Arrowhead Park Marketing Pamphlet**

Park & Recreation Director Kading introduced Ryan Pheifer who is working on the Building & Grounds Committee of the Boys' and Girls' Brigade. Ryan introduced John Benberg, the new Executive Director of the Boys' and Girls' Brigade.

Dir. Kading presented the marketing pamphlet created by the Park & Rec Commission entitled, "Discover Arrowhead Park – A Place to Connect. It has always been his goal to pull all the dollars related to this project to either grant dollars, fund raising or other opportunities for folks in the community to become involved in the project. He asked everyone to review the pamphlet and provide feedback.

### **Arrowhead Park Phase 1A 70% Design Presentation**

SEH Rep Jeff Saxby and Stantec Rep Jon Gumtow gave a brief presentation on Arrowhead Park Phase 1A 70% design. Jeff Saxby reviewed items included in the Arrowhead Park Phase 1A design, particularly the parking and driveway design. The design includes public access, rail crossing, the "carriage" road and Millview Drive. Jon Gumtow reviewed the Touch the Water Design and Riparian Habitat Restoration Design. Jeff outlined the costs: the "carriage" road \$1.6 million; Millview Drive \$172,000, Habitat Restoration \$367,000 and the Touch the Water Design \$66,000; for total cost of \$2,259,000.

They anticipate getting everything to the DNR for review by the end of next week. Two permits are required: a Storm Water Permit; and an Exemption for Development on a historic fill Site or licensed landfill site. Upon approval by the DNR, they intend to complete 70-100% Design from January to April. Potentially bid April to May. Approve the bid in June and begin construction in June to complete in fall.

Jeff Saxby and Jon Gumtow answered questions from the Committee / Commission.

Ald. Stevenson questioned the funding source. Dir. Kading advised that \$1.4 million dollars were budget for this project leaving a significant gap of \$800,000. He will need to look at the specifics and see what can be revised. Jeff Saxby advised the DNR allows pairing back on permit applications.

Mayor Kaufert asked why cut the living trees down to create the fish sticks why not bring in dead trees. Jon Gumtow responded to Mayor Kaufert indicating the DNR has a requirement that there are no trees or woody material on this old landfill. Those trees must be cut down. Absent this project, those trees need to come down anyway as part of the maintenance program for this landfill.

Ald. Steele questioned what will happen to the trees currently on this property if trees are not allowed. Jon Gumtow advised that the biggest design challenge is to avoid the clay cap that is under the topsoil. The berm they are proposing will add additional soil volume and they would use certain species of trees only in that area. Dir. Kading further advised that at some point in time we will be able to plant tree however they will need to be selected species. We will work with Superintendent Fink to find out what species can be planted out there with shallow root systems. Then we need to develop a management plan on how to handle a fallen tree.

Ald. Steele expressed concern over promoting fishing since you cannot eat the fish. Jon Gumtow advised that since the PCB cleanup fish advisories have been removed by the DNR.

**MSC Lendrum/ Steele to convene into closed session of the Committee of the Whole at 6:44 p.m. pursuant to Wis. Stat. §19.85(1)(e) to discuss bargaining strategy regarding a potential public access development project on Arrowhead Park, all voting aye.**


**MSC Hillstrom/Vedder to convene into closed session of the Park & Recreation Commission at 6:44 p.m. pursuant to Wis. Stat. §19.85(1)(e) to discuss bargaining strategy regarding a potential public access development project on Arrowhead Park, all voting aye.**

### **Adjournment**

The Committee/Commission did not go back into open session, they adjourned in closed session.

**MSC Kunz/Bates to adjourn the Committee of the Whole at 7:25 p.m., all voting aye.**

**MSC Hillstrom/Vedder to adjourn the Park & Recreation Commission at 7:25 p.m., all voting aye.**

  
Patricia A. Sturn, WCPC/MMC

## GUIDING PRINCIPLES: VISION:

### Create an Engaging Destination

Arrowhead Park will be a unique destination which draws people from across the region, creates a playground for thousands of downtown employees, and becomes a favorite hiding place for City residents.

### Build an Enduring Park

Arrowhead Park will embrace the City's proud history of innovation and forward thinking and become a jewel in the Fox Cities.

### Touch the Water

Arrowhead Park will bend and caress the water, expanding the park's presence and encouraging all to do more than watch the water from a distance.

### Live Healthy

Arrowhead Park will provide visitors with opportunities to explore, engage, and relax, building upon the already successful Loop the Lake trail project.

### Embrace Nature

Arrowhead Park will bring nature downtown and open over 25 acres for butterflies, birds, and people seeking a greater connection to their environment.

### Build a Future

Arrowhead Park will be the catalyst for greater development of Neenah's already vibrant downtown by providing complimentary space to an active community.



**ARROWHEAD PARK** will be a **major destination** with multiple **recreational and educational experiences** serving a range of guests. The park will be a **treasured local asset**, well-connected to surrounding neighborhoods. It will provide **unique, enriching experiences for all of Neenah's residents** and become **an attraction** that draws even more visitors to Neenah and its thriving local businesses.

## PARTNERSHIP OPPORTUNITIES:

**As we begin the journey** of developing and transforming Arrowhead Park into a truly unique community gathering space we will be seeking community partnerships.

Partnerships will be sought for but not limited to: public art sculptures, a music play garden, an amphitheater, alternative energy (solar and wind), children's natural play areas, outdoor climbing structures and additional water access structures.

**If you are interested in partnering or need additional information please:**

**Call:** 920-886-6062

**E-mail:** [mkading@ci.neenah.wi.us](mailto:mkading@ci.neenah.wi.us)

**Visit** <https://www.ci.neenah.wi.us/departments/parks-recreation/arrowhead-park/> for the latest news



DISCOVER

# ARROWHEAD PARK



A PLACE TO CONNECT





- PHASE 1 (2020/2021)**
1. Park Drive
  2. Parking
  3. Shoreline Aquatic Restoration
  4. Pier and Water Access
  5. Water Education
6. Activity Building
    - Multi-Purpose Space
    - Restrooms
    - Concessions
    - Rentals
  7. Gathering Plaza
  8. Solar Panels  
*(Grant or donor funded)*

- PHASE 2 WEST**
9. Natural Play Area
  10. Prairie Restorations
  11. Continued Water Access
  12. Park Drive Gathering Area
  13. Crushed Limestone Trails System to include:
    - Beginner mountain bike experiences / Pump Track
    - Adventure and Parkour Experiences
- PHASE 2 EAST**
14. Natural Stage/ Amphitheater
  15. Formal Lawn/Gathering Space
  16. Music Play Garden
  17. Natural Play Area
  18. Man-made climbing Structure
  19. Sculpture Garden
  20. Water Access

- PHASE 3**
21. Future Development



**PLAN**

Precedent images shown above are a representation of future park development only and do not depict final design intent







## Fish Consumption Advice for Green Bay and the Lower Fox River Area of Concern



### Benefits of eating your catch

Fish are a nutritious family food. Some of the benefits of catching and eating 1-2 servings of fish per week include:

- Low cost and fun to catch your own fish
- Low in fat, yet high in protein
- Great source of vitamins, minerals, and omega-3 fatty acids

However, polychlorinated biphenyls (PCBs) pose health risks and prompt the need for fish consumption advice. See the next two pages for recommendations on eating fish from the lower Fox River and Green Bay.



Young angler's catch from the Peshtigo River.

### What are polychlorinated biphenyls (PCBs)?

PCBs are man-made chemicals that were used in electrical equipment, industrial processes, and manufacturing and recycling of carbonless copy paper. PCBs were discharged into the Fox River for decades before it was discovered that these chemicals build up in the environment and pose health risks to humans and wildlife. Restrictions on PCB use, manufacturing, and disposal began in the 1970's, but PCBs remain in the sediment of these rivers. Wisconsin and the federal government are working with responsible parties to remediate PCB contaminated sediments in the Lower Fox River and Green Bay. For more information please visit [dnr.wi.gov/org/water](http://dnr.wi.gov/org/water).

### Tell me about PCBs in fish and what types of fish are safe to eat.

- PCBs are resistant to degradation and bioaccumulate to higher concentrations through the food chain
- Younger, smaller fish have lower amounts of PCBs than larger, older predator fish
- PCBs accumulate in the fatty tissue, so fatty fish such as carp and catfish have higher levels of PCBs.

### What are the health risks?

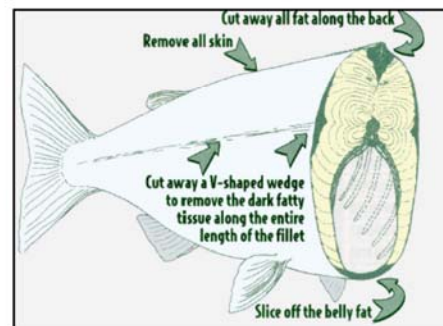
PCBs are stored in your body fat for years. Your health risk may increase as you eat more fish that are high in

- Developmental impairments in children
- Harmful to the immune system
- Harmful to the reproductive system
- Alters thyroid hormones
- Associated with a higher risk of cancer

### How should I prepare and cook my fish?

Proper cleaning and cooking techniques can reduce PCB levels by up to 70%. Follow the following preparation techniques:

- Fillet your fish
- Remove the skin
- Trim away belly fat, fat on the backsides and fatty dark meat
- Do not eat the eggs
- Bake, broil, or grill

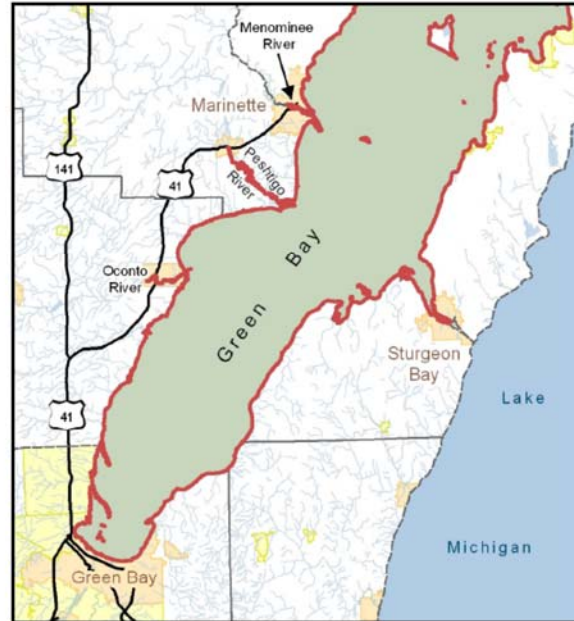




Family fishing at Leicht Park in Green Bay.



Western shore of the Fox River near the Highway 172 bridge.



Green Bay and its tributaries (except the Lower Fox) south of Marinette

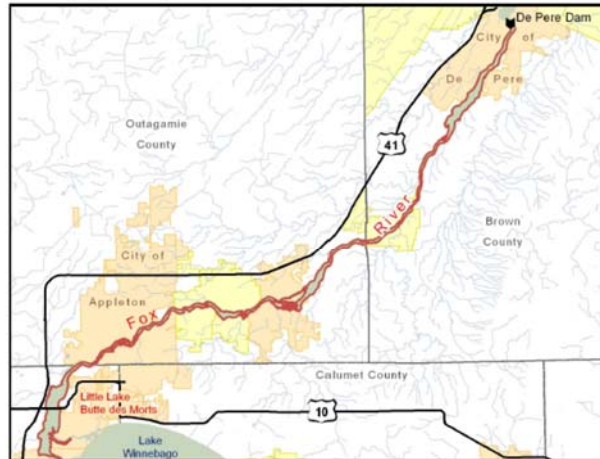
<b>EAT NO MORE THAN</b>	<b>1 meal per week</b>	<b>1 meal per month</b>	<b>1 meal every 2 months</b>	<b>Do Not Eat</b>
<b>Green Bay south of Marinette and its tributaries (except the Lower Fox) including the Menominee, Oconto, and Peshtigo Rivers from their mouths up to the first Dam</b>		brown trout under 28"		<b>brown trout over 28"</b>
	burbot	chinook salmon		<b>carp</b>
		lake whitefish		<b>lake sturgeon</b>
	northern pike under 27"	northern pike over 27"		
		rainbow trout	channel catfish	
		sheepshead	muskellunge over 50"	
	smallmouth bass under 13"	smallmouth bass over 13"		
	white suckers	walleye	white bass	
	yellow perch		white perch	

See WI DNR's website: [dnr.wi.gov/topic/fishing/consumption](http://dnr.wi.gov/topic/fishing/consumption)





Fox River from the De Pere Dam to the mouth



Fox River from Little Lake Butte des Morts to the dam in De Pere

EAT NO MORE THAN	Unrestricted	1 meal per week	1 meal per month	1 meal every 2 months	Do Not Eat
<b>Fox River from the De Pere Dam downstream to the mouth</b>			black crappie bluegill lake whitefish rock bass smallmouth bass white sucker yellow perch  northern pike under 33" sheepshead under 19" walleye under 21"	white perch white bass  northern pike over 33" sheepshead 19" - 23" walleye 21" - 25"	carp channel catfish buffalo  sheepshead over 23" walleye over 25"
<b>Fox River from Little Lake Butte des Morts downstream to the dam at De Pere</b>	bluegill sunfish crappies bullheads (1)	bluegill sunfish crappies bullheads (2)  all other species (1)	channel catfish walleye white bass white perch yellow perch  all other species (2)		carp

1 Men and women over 50 2 Kids under 15 and Women under 50

See WDNR's website: [dnr.wi.gov/topic/fishing/consumption](http://dnr.wi.gov/topic/fishing/consumption)

Summer 2014

